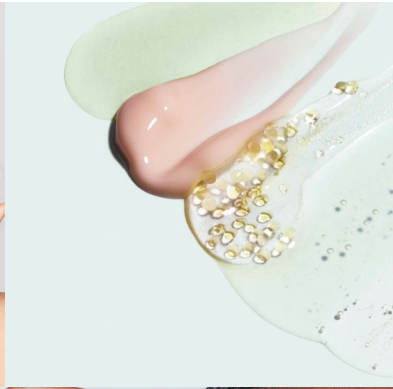


I **IMAGE**
SKINCARE

PRODUCT PORTFOLIO



I **IMAGE**
SKINCARE





is a global skincare brand
powered by proven ingredients,
smart botanicals and
results-first technology.

Skincare professionals have inspired us from day one: IMAGE Skincare was founded by an esthetician, formulated by a plastic surgeon and is recommended by a network of over 50,000 skincare professionals worldwide. We've pioneered clean clinical skincare™, with naturally effective, mindful formulas that deliver real results.

IMAGE Skincare offers 13 collections with more than 100 professional skincare products that allow skincare professionals to customize results-driven regimens and treatment plans for a variety of skin concerns. Each product is tried, true and tested by a team of professionals to help our customers feel the most confident in their skincare—and their skin.



VITAL C

NOURISHING | ENERGIZING | QUENCHING

Our original nourishing + replenishing collection powered by potent, multi-benefit vitamin C



ORMEDIC®

BALANCING | COMFORTING | SOOTHING

A pH-balanced collection crafted with soothing botanicals and certified organic ingredients



AGELESS

REPLENISHING | RENEWING | REWINDING

A collection of age-defying formulas that help to improve visible signs of aging



ILUMA®

BRIGHTENING | ILLUMINATING | CORRECTIVE

A targeted collection powered by botanical brighteners to help fight the appearance of discoloration, dullness and uneven tone



DAILY PREVENTION™

HYDRATING | DEFENDING | NOURISHING

Clinically shown to provide defense beyond sun damage, helping to boost hydration, improve skin's resilience and protect against the future signs of skin aging we can't immediately see.



PREVENTION+®

PROTECTING | MOISTURIZING | DEFENDING

Multi-benefit, moisturizing sun care for broad-spectrum UVA/UVB protection



the MAX

AGE DEFYING | CORRECTIVE | TRANSFORMING

Maximum aging defense with clinically proven technology and targeted peptides to address signs of aging



CLEAR CELL

EXFOLIATING | SMOOTHING | SOOTHING

Expert exfoliating solutions that fight excess oil and the appearance of blemishes to give the confidence of clear skin

I MASK

SMOOTHING | REPLENISHING | DETOXIFYING

A collection of me-time must-haves to replenish and recharge depleted skin



BODY SPA

TARGETED | FIRMING | SLIMMING

A spa-inspired head-to-toe body care collection that visibly smoothes and sculpts



IMAGE MD®

REJUVENATING | POWERFUL | RESTORATIVE

High-performance, doctor-developed skincare with advanced technology for youthful-looking skin



BIOME+®

NURTURING | COMFORTING | BRIGHTENING

Microbiome-friendly skincare that powers a healthy skin barrier



YANA®

RADIANCE BOOSTING | HYDRATING | FIRMING

The collagen beauty liquid that works from the inside out



I BEAUTY

ENHANCING | PERFECTING | TRANSFORMING

Essentials with skincare benefits and finishing touches for gorgeous skin



IMAGE SKINCARE PRO

RENEW | TRANSFORM | ENHANCE

A collection of treatment room essentials, featuring professional-only products with customizable, aloe-based gel peels, advanced peels and treatment enhancers



VITAL C

Our original nourishing + replenishing collection powered by potent, multi-benefit vitamin C



VITAL C hydrating facial cleanser

A creamy, hydrating cleanser that gently removes makeup and impurities

Available in retail, travel, deluxe sample and professional sizes

- Soothing, creamy formula cleanses gently to leave the skin soft and refreshed
- Removes makeup, residue and environmental impurities without stripping away moisture
- Infuses skin with vitamins A, C and E to boost radiance as it cleanses
- Perfect for pre-cleansing to remove makeup

VITAL C hydrating anti-aging serum

A hydrating, multi-vitamin C serum that softens the appearance of wrinkles, fights environmental damage and gives skin a bright, radiant glow

Available in retail, travel, deluxe sample and professional sizes

- Helps to lock in hydration with hyaluronic acid
- Helps to minimize the appearance of lines and wrinkles
- Fights the look of dark spots, discoloration and uneven tone
- Provides antioxidant benefits
- Instantly soothes dull, dry skin while reducing the appearance of visible signs of stress and fatigue
- Imparts noticeable brightness and glow

VITAL C hydrating antioxidant A C E serum

A daily multi-vitamin serum, with essential vitamins, amino acids and green tea extract

Available in retail and deluxe sample sizes

- Multi-vitamin formula provides daily antioxidant defense
- Power blend of plant antioxidants helps to protect against environmental damage
- Red rose wine complex fights signs of aging, including fine lines
- Hydrates and promotes radiant, healthy-looking skin

VITAL C hydrating enzyme masque

A naturally brightening fruit enzyme masque that gives the skin a radiant, healthy-looking glow

Available in retail, deluxe sample and professional sizes

- Gently exfoliates dull skin buildup, leaving skin renewed, radiant and youthful-looking
- Vitamin C and antioxidants nourish the skin and promote a healthy-looking glow
- Hyaluronic acid helps to keep skin hydrated and balanced

VITAL C hydrating repair crème

A nourishing nighttime repair crème that replenishes dry skin and targets signs of aging, like fine lines and wrinkles

Available in retail, travel, deluxe sample and professional sizes

- Hyaluronic acid locks in moisture and soothes sensitivity
- A potent form of vitamin C provides antioxidant benefits and helps to brighten the skin
- Fights the look of fine lines and wrinkles
- Essential vitamin blend nourishes dry, dull and depleted skin
- Vitamin A derivative helps to revitalize skin texture and tone

VITAL C hydrating intense moisturizer

Our most emollient moisturizer rich in nourishing shea butter and hyaluronic acid to help shield the skin against dryness

Available in retail and deluxe sample sizes

- Replenishes the skin and shields against dryness and environmental stressors
- Rich moisturizers support the skin's fragile moisture barrier
- Soothes dryness, irritation and sensitivity
- Vitamin C and peptides promote the appearance of skin elasticity and firmness

VITAL C hydrating eye recovery gel

A light, refreshing gel-crème for eyes that hydrates and refreshes while diminishing the appearance of fine lines and wrinkles

Available in retail, deluxe sample and professional sizes

- Cooling gel texture instantly soothes and refreshes tired eyes
- Vitamin C helps to nourish the undereye area
- Hydrating formula minimizes the look of dark circles and puffiness
- Smooths the appearance of fine lines with targeted peptides
- A blend of antioxidants support healthy-looking skin

VITAL C hydrating overnight masque

An overnight treatment that boosts the appearance of radiance in dull skin while drenching the skin with hydration

Available in retail size

- Energizes and revitalizes the appearance of dull, lackluster skin while you sleep
- Lightweight gel texture hydrates and locks in vital nutrients for all-night nourishment
- Features blue-green algae extract and a triple-mineral complex
- Supports the appearance of vitality and glow

VITAL C hydrating water burst

A transformational hydrating gel that bursts into tiny water droplets on contact to refresh and quench dry skin

Available in retail size

- Transformational gel texture breaks into water droplets upon application, providing intense hydration and preventing moisture loss
- Delivers hyaluronic acid, antioxidants, peptides and brightening nutrients
- Continuously replenishes water to hydrate, soften and smooth the skin
- Boosts the appearance of skin smoothness and bounce

VITAL C hydrating facial oil

A nourishing and replenishing blend of natural plant oils that delivers intensive moisture to dry skin

Available in retail and professional size

- Nutrient-rich argan, sea buckthorn and grape-seed oils nourish and replenish dry skin
- Visibly softens the look of fine lines
- A blend of essential fatty acids and antioxidants provides powerful skin-rejuvenating benefits
- Silky, lightweight texture absorbs quickly for a rapid radiance boost

VITAL C hydrating hand and body lotion

A luxurious quenching lotion formulated to soften skin on the body, hands and feet

Available in retail size

- Rich, luxurious formula with vitamin C supports improved skin texture and tone
- A nourishing blend with beet root extract cushions dry skin with moisture
- A refreshing burst of citrus oils invigorate and energize

VITAL C hydrating facial mist

A lightweight hydrating mist that helps to defend against daily environmental stressors and gives skin a velvety soft finish

Available in retail size

- Provides antioxidant protection, featuring luxe gold sub-microparticles and vitamin C
- Hydrates, refreshes and revitalizes the skin
- Wakes up the skin with a naturally invigorating citrus scent

ORMEDIC balancing facial cleanser

A mild, refreshing gel cleanser that gently foams away impurities, leaving skin soft, hydrated and clean

Available in retail, travel, deluxe sample and professional sizes

- Refreshing gel formula gently sweeps away impurities
- Promotes healthy balance to leave the skin soft, smooth and refreshed
- Contains a curated blend of organic aloe vera, botanicals and flower extracts

ORMEDIC balancing gel polisher

A gentle 3-in-1 polisher that refines and balances the skin, leaving it soft, smooth and refreshed

Available in retail and professional sizes

- Provides 3-in-1 physical, enzymatic and AHA exfoliation
- Brightens and promotes more even skin tone
- Gentle enough for daily use to leave skin feeling soft, smooth and refined
- Improves skin smoothness by 23%*
- Increases brightness by 13%*

ORMEDIC balancing antioxidant serum

A soothing daily antioxidant serum that helps to restore nourishment and hydration to dehydrated skin

Available in retail, deluxe sample and professional sizes

- Restores balance to dehydrated or irritated skin
- Delivers daily antioxidant protection against environmental stressors
- Improves skin hydration by 26%*
- Decreases transepidermal water loss by 18%*

ORMEDIC balancing bio-peptide crème

A nourishing crème with shea butter, mango butter and plant oils to nourish and replenish moisture-depleted skin

Available in retail, deluxe sample and professional sizes

- Tetrapeptide complex gives the look of polished, lit-from-within skin
- Sodium hyaluronate and organic grape water help lock in vital hydration
- Plush, velvety texture melts into the skin to soothe and smooth
- Improves skin hydration by 24%*
- Improves skin clarity and luminosity by 16%*

ORMEDIC balancing eye lift gel

A light, cooling eye gel that visibly de-puffs, soothes and refreshes the eye area

Available in retail and professional sizes

- Soothes and hydrates dry, puffy eyes
- Quinoa extract contains a natural peptide to reduce the appearance of undereye bags and puffiness
- Targeted multi-peptide blend smoothes fine lines
- Improves fine lines by 13%*
- Improves hydration of eye area by 36%*

ORMEDIC balancing gel masque

An ultra-gentle gel masque that instantly soothes and refreshes delicate, dry and tired skin

Available in retail, deluxe sample and professional sizes

- Helps to support the skin's resilience against dryness and environmental stressors
- Hydrates, soothes and refreshes the skin
- Helps skin maintain essential hydration
- Ideal for use after sun exposure
- Improves skin irritation by 16%*
- Improves hydration by 24%*

ORMEDIC balancing lip enhancement complex

A soothing lip treatment that improves moisture and plumps the lips' appearance

Available in clear retail and professional sizes and tinted pink retail size

- Replenishing formula with avocado oil and vitamin E moisturizes dry lips
- Soothes and nourishes the lips
- Helps lips appear plumper and fuller
- Available in a sheer pink formula that gives lips a soft rosy hue

*Based on a 4-week clinical study and consumer panel of 30 female participants. Study data on file with Image International Manufacturing, LLC.

AGELESS

A collection of age-defying formulas that help to improve visible signs of aging



AGELESS total facial cleanser

A revitalizing cleanser that jumpstarts exfoliation to help reveal smoother skin

Available in retail, deluxe sample and professional sizes

- Exfoliates as it cleanses for smoother skin
- Glycolic acid sweeps away buildup that leads to dullness
- Helps to decongest clogged pores and supports the look of skin clarity
- Menthol refreshes and cools the skin

AGELESS total anti-aging serum

An AHA-based resurfacing serum that targets signs of aging to help improve the appearance of fine lines, wrinkles and dullness

Available in retail and deluxe sample sizes

- Addresses multiple aging concerns, including wrinkles, dryness and lack of firmness
- Combined action of glycolic and lactic acid smoothes the appearance of fine lines
- A targeted firming peptide tightens the skin's appearance, promoting more youthful-looking skin
- Helps to renew the look of radiance and even tone

AGELESS total repair crème

A nighttime repair crème with glycolic acid that diminishes dullness and supports youthful-looking skin

Available in retail and sample sizes

- Combats visible signs of aging, including fine lines, wrinkles and uneven skin tone and texture
- Hyaluronic acid helps to bind needed hydration to the skin, softening the appearance of fine lines and crepiness
- Shea butter helps to soften and moisturize dry skin
- Supports the look of firmness and tone

AGELESS total pure hyaluronic⁶ filler

A topical hydration filler that helps to plump the skin's appearance and soften the look of facial lines

Available in retail and deluxe sample sizes

- Features six unique types of hyaluronic acid, including time-released and cross-linked HA with water-binding properties
- Helps to soften the look of fine lines and wrinkles
- Provides a rapid boost of hydration to plump and smooth the skin's appearance

AGELESS total overnight retinol masque

A revitalizing masque featuring encapsulated retinol technology that transforms the skin's appearance while you sleep

Available in retail size

- Encapsulated, time-released retinol revitalizes uneven texture and tone
- Marine collagen microspheres add a layer of hydration, helping to plump the appearance of fine lines and wrinkles
- A peptide complex helps support improved skin elasticity and firmness
- Helps to minimize the visible signs of aging

AGELESS total resurfacing masque

A multi-exfoliating AHA + BHA masque that helps to sweep away dull skin

Available in retail, deluxe sample and professional sizes

- Exfoliates, resurfaces and revitalizes to promote a smooth, youthful-looking appearance
- A blend of glycolic and salicylic acids removes dead skin buildup
- Helps to smooth and brighten skin for a fresher look and feel
- Jojoba beads smooth away dull surface skin for increased radiance and even tone

AGELESS total eye lift crème

A renewing formula gently blended with glycolic acid and vitamin A that targets signs of aging around the eyes

Available in retail size

- Targeted formula helps to minimize visible signs of aging around the eye area
- Glycolic acid and vitamin A help to revitalize the skin's appearance
- A peptide complex helps to reduce the appearance of undereye bags
- Enhanced with microalgae extract to support youthful-looking skin

AGELESS total microderm exfoliator*

An ultra-exfoliator that features three forms of exfoliants to help even out skin tone and texture

Available in retail size.

- Combines chemical, enzymatic and physical exfoliating agents to exfoliate dull skin
- Smooths uneven skin texture and improves the appearance of fine lines
- Features starfruit, kiwi and pineapple fruit enzymes, alpha and poly hydroxy acids, rose quartz microcrystals and bamboo powder

AGELESS total retinol-A crème*

An intensive blend of retinol, glycolic acid and lactic acid that helps to repair visible signs of aging and revitalize the appearance of dull skin

Available in retail and professional sizes

- Helps to revitalize dull, dry skin
- Enhanced delivery system with encapsulated retinol supports wrinkle correction
- A peptide complex helps to reduce the appearance of facial lines and improve skin tone
- Formulated for advanced skincare routines

*Available exclusively through IMAGE professionals

ILUMA

A targeted collection powered by botanical brighteners to help fight the appearance of discoloration, dullness and uneven tone



ILUMA intense brightening exfoliating cleanser

A one-step, fresh foaming cleanser that visibly brightens, exfoliates and sweeps away impurities

Available in retail, travel, deluxe sample and professional sizes

- Exfoliates and refines dull skin with a mushroom enzyme, bamboo spheres and smart-sending beads
- Boosts luminosity and promotes hydration
- Leaves skin soft, smooth and radiant

ILUMA intense brightening exfoliating powder

A water-activated, micro-exfoliating powder that gently polishes and buffs away dead skin

Available in retail and professional sizes

- Gently exfoliates dull, dead skin cells to promote a radiant appearance
- Natural enzymes help to brighten and smooth the skin
- Improves the appearance of uneven texture and tone

ILUMA intense brightening serum

A botanically-enhanced serum with natural plant-based brighteners to help even skin tone

Available in retail, travel, deluxe sample and professional sizes

- A blend of plant-based brighteners help to promote radiant, even-toned skin
- Vitamin C and bearberry leaf extract diminish dullness and improve the appearance of dark spots
- Silky texture sinks in quickly to give the skin a hydrated, dewy finish

ILUMA intense brightening crème

A rich, botanically-powered crème that boosts radiance and clarity in uneven skin

Available in retail size

- Helps to reduce the appearance of dark spots and uneven skin tone
- Vitamin C helps to brighten dull skin
- Radiance-boosting peptides help to promote a youthful-looking glow
- Rich and hydrating natural oils moisturize the skin

ILUMA intense facial illuminator

A concentrated corrector + brightening booster that helps to reduce the appearance of pigmentation and dark spots

Available in retail and deluxe sample sizes

- Power-packed formula with tranexamic and glycolic acids helps to correct the appearance of dark spots
- Vitamin C helps to boost luminosity and promote even skin tone
- A brightening complex with natural extracts and niacinamide helps to hydrate and promote radiant, healthy-looking skin
- 97% of participants reported the product boosts luminosity in uneven skin tone*
- 94% of participants agreed the product evens skin tone and texture*
- Improves uneven skin tone and pigmentation by 17%*

ILUMA intense brightening eye crème

A peptide-powered eye cream that helps to diminish the appearance of dark circles

Available in retail size

- A blend of peptides help to minimize the appearance of dark circles and smooth the skin
- Hyaluronic acid hydrates and promotes a youthful appearance
- Rich texture absorbs easily into the delicate eye area

ILUMA brightening body lotion

A nourishing and moisturizing body lotion that helps to replenish dry skin and improve skin tone

Available in retail size

- Brightening peptides and Indian kudzu help to unveil smooth, radiant skin
- Targets the appearance of dark spots to promote more even-toned skin
- A blend of moisturizing oils help to replenish dry skin and leave a luminous glow

*Based on a 4-week clinical study and consumer panel of 30 female participants ages 23 - 55 with daily application of the ILUMA intense facial illuminator. Study data on file with Image International Manufacturing, LLC.

DAILY PREVENTION

Clinically shown to provide defense beyond sun damage, helping to boost hydration, improve skin's resilience and protect against the future signs of skin aging we can't immediately see.



DAILY PREVENTION advanced smartblend mineral moisturizer SPF 75

Available in retail, backbar and deluxe sample size

- Color-correcting tint and soothing hydration for daily wear and post-care use
- Vegan squalane derived from sugarcane moisturizes the skin, helping to support its moisture barrier
- A botanical blend of green seaweed, holy Thai basil and lady's thistle extract helps to soothe the skin
- Features all-mineral zinc oxide and titanium dioxide sunscreen filters
- Water resistant (80 minutes)
- Increases hydration levels by 87%*
- Decreases skin redness by 21%*

*Based on a 2-week clinical and consumer perception study of 30 participants ages 25 - 55 with once-daily application of DAILY PREVENTION advanced smartblend mineral moisturizer SPF 75

DAILY PREVENTION sheer matte moisturizer SPF 30

Available in retail, backbar, travel and deluxe sample size

- Silky formula that smoothes skin's appearance with a satin-matte finish
- Oil-reducing microspheres help control unwanted shine throughout the day
- Neutral, blendable tint helps to minimize white cast on all skin tones
- Features mineral zinc oxide and chemical sunscreen filters
- Water resistant (40 minutes)
- 80% of users agreed it controls shine and keeps skin feeling mattified throughout the day*
- 90% of users agreed it does not leave a white cast after one application*

*Based on a 2-week clinical and consumer perception study of 30 participants ages 20 - 40 with once-daily application of DAILY PREVENTION sheer matte moisturizer SPF 30.



DAILY PREVENTION pure mineral hydrating moisturizer SPF 30

Available in retail, backbar and deluxe sample size

- Lightweight, dewy hydration that blends into most skin tones without a white cast
- High-molecular weight hyaluronic acid and select humectants draw in moisture to leave skin soft and smooth
- Features an all-mineral zinc oxide sunscreen filter
- Water resistant (80 minutes)
- 83% of users agreed it feels weightless on the skin after one application*
- Increases hydration levels by 57%*

*Based on a 2-week clinical and consumer perception study of 30 participants ages 25 – 50 with once-daily application of DAILY PREVENTION pure mineral hydrating moisturizer SPF 30.

DAILY PREVENTION pure mineral tinted moisturizer SPF 30

Available in retail, backbar and deluxe sample size

- Sheer tint gives light, blurring coverage for a radiant finish and healthy glow on all skin tones
- Features all-mineral zinc oxide and titanium dioxide sunscreen filters
- Water resistant (40 minutes)
- 87% of users agreed their skin looks more even-toned after one application*
- Increases hydration levels by 65%*

*Based on a 2-week clinical and consumer perception study of 30 participants ages 25 – 50 with once-daily application of DAILY PREVENTION pure mineral tinted moisturizer SPF 30.

DAILY PREVENTION ultra defense moisturizer SPF 50

Available in retail, backbar and deluxe sample size

- Radiant hydration with a unique, cushiony feel that blends seamlessly on all skin tones without a white cast
- Organic cocoa butter moisturizes and nourishes the skin
- Features mineral zinc oxide and chemical sunscreen filters
- Water resistant (80 minutes)
- 83% of users agreed that product did not leave a white cast after one application*
- Increases hydration levels by 35%*

*Based on a 2-week clinical and consumer perception study of 30 participants ages 20 – 45 with once-daily application of DAILY PREVENTION ultra defense moisturizer SPF 50.

DAILY PREVENTION protect and refresh mist SPF 40

Available in retail size

- Hydrating dry-oil spray that goes on clear and absorbs quickly for a beautiful glow and barely-there feel
- Perfect to refresh + reapply UV protection on the go or throughout the day, even over makeup
- Meadowfoam seed oil helps lock in moisture to leave skin soft and supple
- Enhanced with buriti fruit oil, an antioxidant-rich blend of vitamins A, C and E that helps moisturize and give skin a healthy glow
- Features chemical sunscreen filters
- Water resistant (80 minutes)

PREVENTION+

A bestselling collection of SPF moisturizers, with Digital Aging Defense™ to help protect against environmental stressors



PREVENTION+ daily perfecting primer SPF 50

A tinted SPF 50-infused primer that smoothes skin and blurs the appearance of wrinkles, uneven texture and pores

Available in retail size

- Multi-tasking tinted skin perfecter, primer and SPF moisturizer in one
- Features 100% mineral filters for broad-spectrum UVA/UVB protection
- Silica-enhanced formula creates a photo-filter effect that blurs the look of imperfections
- Sheer, buildable and adaptable to most skin tones
- Ferment-based ingredient helps to mitigate the effects of environmental stressors that can cause dryness, such as sun and wind
- Non-comedogenic formula
- Recommended by The Skin Cancer Foundation as safe and effective sun protection

PREVENTION+ clear solar gel SPF 30

A completely clear, waterless SPF 30 sunscreen gel that provides broad-spectrum UV protection and glides on for a velvety finish

Available in retail and deluxe sample sizes

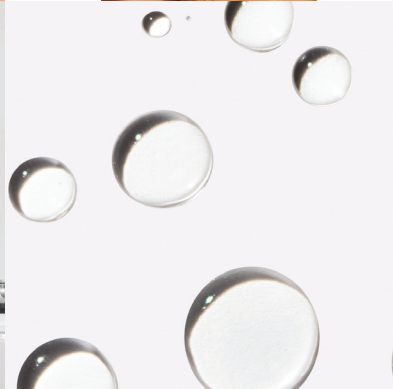
- Airy, transparent formula disappears into the skin and helps grip makeup
- Formulated with a blend of antioxidants, including vitamin C, vitamin E and green tea
- Plant-derived squalane helps to moisturize the skin for a smooth look and feel
- Universal formula works for all skin tones
- Water resistant for up to 80 minutes

PREVENTION+ sun serum SPF 30

A mineral SPF 30 sunscreen serum that provides broad-spectrum UV protection with a featherweight, dewy finish

Available in retail and deluxe sample sizes

- Innovative formula features an all-mineral UV filter in a hydrating serum texture for daily use
- Plant-derived squalane from sugarcane helps to moisturize the skin
- Formulated with antioxidants ginger root extract, vitamin C and vitamin E
- Chamomile helps to soothe the skin
- Available in tinted and untinted



the MAX

Maximum aging defense with clinically proven technology and targeted peptides to address signs of aging



the MAX facial cleanser

A luxurious, silky cleanser with advanced peptides and plant extracts for youthful-looking skin

Available in retail, deluxe sample and professional sizes

- Creamy, luxurious formula gently sweeps away makeup and impurities
- A silky, foaming cleanser formulated with oat kernel extract, peptides, and plant stem cell technology
- Invigorating grapefruit scent uplifts and refreshes the senses
- Nourishing formula conditions the skin

the MAX serum

A potent peptide serum that improves the appearance of fine lines and wrinkles

Available in retail, deluxe sample and professional sizes

- Helps to minimize signs of aging, including fine lines, wrinkles and lost firmness
- A targeted peptide helps to firm and revitalize the skin's appearance over time
- Proprietary Vectorize Technology® releases encapsulated key ingredients to support prolonged effectiveness
- Lightweight and easy to layer for daily age-defying benefits

the MAX crème

A moisturizing repair crème that helps to nourish, revitalize and support the look of firmer, tighter skin

Available in retail, deluxe sample and professional sizes

- Luxurious, peptide-enhanced crème improves the look of fine lines and wrinkles
- A rich age-defying moisture crème helps correct visible signs of skin damage
- Formulated with glycerin to help nourish and hydrate the skin
- Vectorize Technology® releases encapsulated key ingredients to support prolonged effectiveness

the MAX eye crème

A rejuvenating eye treatment that reduces the appearance of fine lines, wrinkles, dark circles and puffiness

Available in retail and professional sizes

- Multi-benefit formula targets all signs of aging around the eye area
- Helps to minimize the look of dark circles and puffiness
- Rich, hydrating formula helps to nourish fragile undereye skin

the MAX masque

A luxurious hydrating masque that helps to visibly improve the appearance of skin tightness, firmness and elasticity

Available in retail, deluxe sample and professional sizes

- Revitalizes the skin to promote a smooth, plump appearance
- Plant cell extracts help to fight the appearance of signs of aging
- Gives a hydrating boost to dull, dry skin

the MAX neck lift

A firming cream that targets skin laxity, sagging, wrinkles and creasing on the neck and décolleté

Available in retail size

- An optimized concentration of peptides and plant cell extracts help to provide a tightened, lifted look and improve the appearance of sagging in the jawline
- Helps to reduce the appearance of etched-in lines on the neck
- 89% of subjects demonstrated improvement in skin firmness*
- 86% of subjects reported improvement in skin texture*
- 82% of subjects reported improvement in sagging of the jawline*

the MAX contour gel crème

A contouring gel crème that restores the look of firmness and facial volume

Available in retail, deluxe sample and professional sizes

- Anti-gravity peptide helps to counteract the appearance of facial sagging, restoring youthful-looking fullness to the lower face
- Nutrient-dense plant extracts help to restore firmness and improve the appearance of facial contours
- Patented microburst technology gives an instant moisture-melting effect
- Improves firmness by 24%[†]
- Improves elasticity by 21%[†]
- Improves volume by 13%[†]

*Based on a 4 week clinical study and consumer panel of 29 female participants ages 43 – 67 with daily application of the MAX stem cell cleanser and the MAX stem cell neck lift. Study data on file with Image International Manufacturing, LLC.

†Based on a 4-week clinical study and consumer panel of 30 female participants ages 43 – 55 with daily application of the MAX contour gel crème. All photos taken at a third-party independent clinical testing laboratory. Photos have not been retouched. Study data on file with Image International Manufacturing, LLC.

CLEAR CELL

Expert exfoliating solutions that fight excess oil and the appearance of blemishes to give the confidence of clear skin



CLEAR CELL clarifying salicylic gel cleanser

A salicylic-based gel cleanser that lightly exfoliates while foaming away excess oil, shine and impurities

Available in retail, professional, travel and deluxe sample sizes

- BHA-based formula removes oil, shine and impurities while sweeping away dead skin that can clog pores
- Features a peptide complex with botanicals and honey extract
- Fresh foaming lather with mint, eucalyptus and tea tree oils cools and refreshes the skin
- Non-comedogenic formula

CLEAR CELL restoring serum

A lightweight soothing serum that hydrates oily skin while absorbing surface oils for a mattifying effect

Available in retail size and travel sizes

- Balances, hydrates and fights the appearance of excess shine in oily skin
- Tamarind extract mimics the effects of hyaluronic acid, enhancing the appearance of skin smoothness and elasticity
- Features a peptide and botanical complex to soothe and maintain healthy-looking skin
- Antioxidant vitamin C helps to brighten the appearance of discoloration
- Non-comedogenic formula

CLEAR CELL clarifying salicylic pads

Convenient exfoliating pads that feature combination of salicylic acid and glycolic acid to sweep away dull, dead skin

Available in retail size

- Easy-to-use salicylic and glycolic acid pads help clear away excess oil and exfoliate dead skin buildup
- A soothing plant-based complex with lilac extract helps to minimize shine
- Designed to conveniently sweep away oil, dirt and impurities after exercise or on the go
- Help to gently smooth and refine uneven skin texture
- Non-comedogenic formula

CLEAR CELL clarifying salicylic tonic

A daily clarifying and toning solution that lightly exfoliates, sweeps away dead skin and minimizes shine

Available in retail size

- A blend of salicylic and glycolic acids helps to exfoliate and remove excess oil from the skin
- A botanical complex with lilac extract helps to reduce the appearance of redness and shine
- Helps to sweep away dead skin buildup to give the skin a smooth appearance
- Non-comedogenic formula

CLEAR CELL mattifying moisturizer

A lightweight moisturizer that hydrates oily prone skin while minimizing the appearance of excess shine

Available in retail size

- Leaves skin with a soft matte finish and healthy-looking appearance
- Enriched with turmeric extract and a form of vitamin B6
- Tamarind complex enhances the appearance of skin elasticity, smoothness and hydration
- Features a peptide and botanical complex to soothe and maintain healthy-looking skin
- Non-comedogenic formula

CLEAR CELL clarifying salicylic masque

An exfoliating clay masque with salicylic and glycolic acids to help remove excess oil from the skin

Available in retail size

- Formulated with 2% salicylic acid to help remove excess oil and clarify clogged pores
- Glycolic acid and natural jojoba beads help to reduce dead skin buildup
- Leaves skin soft, fresh and mattified
- Non-comedogenic formula

CLEAR CELL clarifying repair crème

A multi-action gel-crème that helps to reduce the appearance of blemishes through exfoliation while minimizing visible signs of aging

Available in retail, travel and deluxe sample sizes

- Proven benefits from salicylic acid help to reduce the appearance of blemishes through surface exfoliation, clarify pores and remove excess oil
- Naturally derived bakuchiol mimics the benefits of retinol, providing a gentler alternative that helps to reduce the appearance of fine lines, wrinkles and skin discoloration while refining texture
- Ceramides and squalane infuse the skin with essential hydration
- Improves oiliness by 27%[†]
- Decreases transepidermal water loss by 26%[†]
- Improves skin texture by 24%[†]
- Improves lines and wrinkles by 21%[†]
- Non-comedogenic formula

[†]Based on a 4-week clinical study of 35 participants ages 20 - 55 with twice daily application of CLEAR CELL clarifying repair crème. Study data on file with Image International Manufacturing, LLC

*Based on a 4-week clinical study of 35 participants ages 20 - 40 with twice daily application of CLEAR CELL clarifying acne spot treatment. Study data on file with Image International Manufacturing, LLC.

**Based on a 4-week consumer perception study of 35 participants ages 20 - 40 with twice daily application of CLEAR CELL clarifying acne spot treatment. Study data on file with Image International Manufacturing, LLC.

CLEAR CELL acne treatment products

CLEAR CELL clarifying acne spot treatment

A powerful acne spot treatment with 2% salicylic acid that targets existing acne blemishes while preventing new acne blemishes, blackheads and whiteheads from forming

Available in retail size

- Formulated with 2% salicylic acid to penetrate pores and clear most acne blemishes, blackheads and whiteheads
- Reduces the severity of acne blemishes and helps prevent the development of new acne breakouts
- Clear, undetectable application for use during the day or under makeup
- Helps to reduce the look of pores*
- Helps to soothe treated areas**
- Helps to minimize the appearance of redness**
- Improves the appearance of redness by 14%*
- Non-comedogenic formula

CLEAR CELL clarifying acne lotion

A targeted daily treatment with 5% benzoyl peroxide that penetrates pores to clear most acne blemishes

Available in retail and deluxe sample sizes

- Helps clear acne blemishes and allows skin to heal
- Benzoyl peroxide penetrates pores to eliminate most acne blemishes, blackheads and whiteheads
- Formulated with aloe vera to help soothe the skin
- Non-comedogenic formula



I MASK

A collection of me-time must-haves to replenish and recharge depleted skin



I MASK purifying probiotic mask

A super-green clay mask enriched with superfood ingredients and probiotics that balances the skin's naturally occurring flora

Available in retail, deluxe sample and professional sizes

- Yogurt-based probiotic blend supports skin's natural flora for optimal balance and probiotic skin defense
- Mineral-rich Brazilian green clay and activated charcoal help to detoxify, clear away impurities and refine skin texture
- Features a nourishing antioxidant blend of goji, pomegranate, mangosteen and açai
- Helps to support skin's resistance to dehydration and imbalance

I MASK firming transformation mask

A luxurious transformational mask that hydrates, polishes and leaves the skin feeling firm and revitalized

Available in retail, deluxe sample and professional sizes

- Supports the skin's ability to resist stress that causes damage and other visible signs of aging
- Rare pepper berry plant extract supports skin's wellbeing
- Polishing jojoba beads smooth away dullness for improved texture, tightness and tone

I MASK hydrating hydrogel sheet mask

A rapid quenching sheet mask featuring mineral-rich volcanic waters to leave skin dewy and revitalized

Available in single and 5-pack sizes

- Soothes and refreshes dry, depleted skin
- Hyaluronic acid acts as a water magnet to draw hydration to the skin
- A blend of Onsen-sui and Jeju volcanic waters, amino acids and aloe vera nourish and hydrate

BODY SPA

A spa-inspired head-to-toe body care collection that visibly smoothes and sculpts



BODY SPA CELL.U.LIFT® firming body crème

A rich, nourishing body crème designed to help sculpt and promote a smooth, toned appearance

Available in retail size

- Green coffee and mate extracts help to tone and sculpt the skin's appearance
- Supports skin elasticity for the look of smooth, healthy-looking skin
- Aloe vera helps to hydrate and moisturize the skin

BODY SPA rejuvenating body lotion

A revitalizing body lotion that smoothes and softens rough skin like elbows, hands and feet

Available in retail size

- Advanced exfoliating formula with glycolic acid helps to smooth dull, dry and rough skin on the body
- A perfecting peptide complex promotes youthful-looking skin
- Macadamia seed oil mimics skin's natural moisturizers, sinking in quickly to replenish dry areas
- Refines uneven texture for a soft, smooth and even-toned appearance

BODY SPA exfoliating body scrub

An exfoliating polish that helps to smooth away dull, flaky skin on the body, leaving skin smooth and radiant

Available in retail size

- Buffs away dull, dry and flaky skin for renewed softness and smoothness
- Natural crushed walnut shells provide gentle exfoliation
- Features a lush, warm scent with natural vanilla fruit, coconut and almond extracts

IMAGE MD

High-performance, doctor-developed skincare with advanced technology for youthful-looking skin



IMAGE MD restoring facial cleanser*

A refreshing cleanser that gently revitalizes dull skin with a blend of glycolic, lactic and salicylic acids

Available in retail and deluxe sample sizes

- Gently cleanses, revitalizes and removes impurities
- Formulated with aloe leaf juice and menthol for a refreshing cleansing experience
- Creates an optimal canvas for application of IMAGE MD serums and crèmes

IMAGE MD restoring youth serum*

A reparative serum with vitamin C, plant cell extracts and peptides to help restore visible firmness and reduce the appearance of fine lines and wrinkles

Available in retail and deluxe sample sizes

- Advanced technology ensures optimal delivery of key ingredients that address signs of skin aging
- Improves the appearance of fine lines and lost firmness
- A stabilized form of vitamin C helps to visibly brighten the skin

IMAGE MD restoring youth repair crème*

A nightly repair crème with retinol, glycolic acid and vitamin C that helps to improve visible signs of skin aging and brighten dull skin

Available in retail and deluxe sample sizes

- A blend of retinol, glycolic acid and oil-soluble vitamin C helps to improve visible signs of skin aging, including fine lines, wrinkles and environmental damage
- Glycolic acid works to revitalize and brighten dull skin
- Advanced delivery technology delivers key ingredients that promote the appearance of firm, youthful and radiant skin

IMAGE MD restoring brightening crème*

A targeted crème that helps to correct the appearance of unwanted pigmentation for a more radiant, even-toned complexion

Available in retail size

- A blend of peptides and botanical brightening agents help to reduce visible discoloration, leaving the skin luminous and radiant
- Helps to improve skin clarity and the appearance of uneven skin tone
- Vitamin C and daisy flower extract help to target discoloration

IMAGE MD restoring retinol crème*

A high-performance crème formulated with retinol and glycolic acid to minimize the appearance of fine lines, wrinkles, dullness and other signs of skin aging

Available in retail size

- Advanced technology delivers key ingredients to help improve the visible signs of skin aging, revitalize the skin and promote even tone
- Formulated with glycolic acid to help smooth the appearance of fine lines and wrinkles
- Stable, encapsulated retinol is transported to the skin for effective results
- A peptide complex fights the appearance of wrinkles and uneven tone

IMAGE MD restoring overnight retinol masque*

A gentle overnight retinol masque that helps improve the appearance of fine lines and wrinkles, minimize the look of imperfections and support skin firmness

Available in retail size

- Encapsulated, time-released retinol helps to revitalize uneven texture and tone
- Marine collagen microspheres infuse hydration and help to plump the appearance of fine lines and wrinkles
- A peptide complex with palmitoyl tripeptide-5 improves skin elasticity and firmness

IMAGE MD restoring daily defense moisturizer SPF 50*

A broad-spectrum SPF 50 moisturizer that provides UVA/UVB protection while defending against environmental stressors, such as sun and wind

Available in retail and deluxe sample sizes

- Provides broad-spectrum UVA/UVB protection with zinc oxide and titanium dioxide mineral filters
- A blend of antioxidants and mineral filters help to defend against environmental stressors, such as sun and wind
- Perfect for everyday wear under makeup or during outdoor activities
- Blends to a sheer, weightless finish

IMAGE MD restoring retinol booster*

A targeted booster that addresses fine lines and wrinkles with retinol and the nourishing benefits of essential fatty acids

Available in retail size

- Helps to fight signs of skin aging and reduce the appearance of fine lines and wrinkles
- Grapeseed and moringa oils help to nourish the skin, infusing antioxidants and essential fatty acids for a surge of moisture
- Supports the appearance of improved texture and tone

IMAGE MD restoring recovery eye gel*

A hydrating eye gel that helps to reduce the appearance of fine lines, wrinkles, puffiness and dark circles

Available in retail size

- Advanced technology delivers key ingredients to improve the look of wrinkles and loss of firmness in the eye area
- A targeted peptide complex reduces the appearance of fine lines
- Helps to restore a bright, well-rested look to the eyes
- Marine collagen microspheres help to plump the appearance of crepey skin

IMAGE MD restoring lip enhancer SPF 15

A moisturizing lip treatment that provides broad-spectrum SPF 15 sun protection while boosting the appearance of dry, thin lips

Available in retail size

- Ultra-hydrating lip complex replenishes moisture and leaves lips feeling soft, smooth and nourished
- Provides broad-spectrum SPF 15 sun protection for daily use
- Formulated with an oligopeptide complex and marine collagen filling spheres to enhance the lips' appearance

IMAGE MD restoring power-C serum

A high-performance vitamin C serum that combines the potency of 20% tetrahexyldecyl ascorbate with hyaluronic acid and antioxidants acetyl zingerone (ginger), ferulic acid and vitamin E

Available in retail and travel sizes

- A 20% concentration of tetrahexyldecyl ascorbate (vitamin C) helps to diminish the appearance of pigmentation and brighten the skin
- Ferulic acid helps to defend against the effects of environmental damage[†]
- Acetyl zingerone, a super-antioxidant derived from ginger, helps to reduce visible signs of photoaging, including the look of wrinkles, pigmentation and redness
- Hyaluronic acid complex is optimized to lock hydration into the skin, helping to restore firmness, smoothness and elasticity
- Silky, elegant texture leaves skin with a beautifully soft, dewy finish
- Improves firmness by 39%**
- Improves skin tone and pigmentation by 36%**
- Improves lines and wrinkles by 24%**

IMAGE MD restoring eye masks

Cooling hydro-gel eye masks that rapidly refresh, soothe and reduce visible signs of fatigue

Available in retail size

- Cool and refresh skin on contact and help to wake up tired eyes
- Formulated to help reduce the appearance of puffiness and fine lines
- Triple-hyaluronic acid complex works to smooth, soften and hydrate delicate skin under the eyes
- Formulated with aloe vera and caffeine to help perk up dull, tired skin
- Antioxidant and tetrapeptide blend helps to reduce visible signs of fatigue
- Ophthalmologist tested

IMAGE MD skincare system*

A four-step kit that brings together the benefits of the IMAGE MD collection in a simple-to-use, results-driven daily regimen

- Features IMAGE MD restoring facial cleanser, IMAGE MD restoring youth serum, IMAGE MD restoring youth repair crème and IMAGE MD restoring daily defense moisturizer
- Developed by a plastic surgeon with advanced delivery technology to help improve visible signs of aging

*Available exclusively through IMAGE professionals

[†]Based on in-vitro testing results performed by the ingredient supplier.

^{**}Based on a 12-week clinical study of 35 participants ages 20 - 55 with once daily application of IMAGE MD restoring power-C serum. Study data on file with Image International Manufacturing, LLC.

BIOME+

Microbiome-friendly skincare that powers a healthy skin barrier



BIOME+ cleansing comfort balm

A skin-nurturing cleansing balm that melts away makeup, dirt and impurities, leaving the skin soft and hydrated

Available in retail, travel and deluxe sample sizes

- Plant-based nourishing oils release a burst of moisture to comfort dry skin
- Sugarcane-derived, fermented squalane moisturizes and helps to support a healthy skin moisture barrier
- Ashwagandha, an adaptogenic plant, helps to reduce moisture loss and leave skin with a healthy glow
- Perfect as a pre-cleanse to remove long-wear makeup

BIOME+ dew bright serum

A hydrating hybrid oil-serum that targets uneven tone, helping to reignite a dewy, lit-from-within glow

Available in retail, travel and deluxe sample sizes

- Certified microbiome-friendly squalane derived from sugarcane helps to enhance elasticity and supports the appearance of smooth, supple skin
- Niacinamide helps to smooth and even skin tone
- Adaptogenic tiger grass and holy basil plant extracts give skin a radiant, healthy-looking glow
- Micro-sunflower extract helps to boost skin clarity and luminosity while delivering more uniform, even tone
- Fermented, cross-linked hyaluronic acid helps bind water to the skin to support its moisture barrier

BIOME+ smoothing cloud crème

A cushioning moisture crème that delivers cloud-like hydration and works to smooth skin texture while minimizing the look of pores

Available in retail, travel and deluxe sample sizes

- Certified microbiome-friendly, fermented squalane derived from sugarcane supports the skin's moisture barrier while improving skin texture and bounce
- Adaptogenic snow mushroom extract and hyaluronic acid help to lock in lasting hydration and support a healthy skin barrier
- Flax and celery super-seed extracts visibly refine skin texture and help to minimize the look of pores
- Micro-sunflower extract helps to promote more luminous, radiant skin
- Pink rock-rose extract works to soothe and comfort the skin



YANA

The collagen beauty liquid that works from the inside out



YANA daily collagen shots

A revolutionary collagen supplement that works from the inside out for healthy-looking skin*

Available in 28-pack vials

- Powered by a highly concentrated ingredient blend of collagen peptides, antioxidants and vitamins
- Supports radiant, healthy-looking skin*
- Improves skin hydration*[†]
- Improves skin elasticity*[†]
- Improves the appearance of fine lines and wrinkles around the eye area*[†]
- Gluten-free formula

*These statements have not been evaluated by the Food and Drug Administration. This product is not intended to diagnose, treat, cure or prevent any disease.

[†]Based on a 4 week clinical study and consumer panel of 21 female participants ages 42 - 64. Participants consumed 1 vial (0.5 fl oz / 15 mL) of YANA Beauty Liquid 1 time per day. Study data on file with Image International Manufacturing, LLC. Individual results may vary depending on multiple factors: age, gender, skin type and condition, concomitant products used, health history, location, lifestyle and diet.

I BEAUTY

Makeup with skincare benefits and finishing-touch essentials for gorgeous skin



I BEAUTY flawless foundation brush

A professional-quality HD brush designed with dense synthetic bristles for flawless application, blending and contouring

Available in retail size

- Blends and buffs makeup for an airbrushed effect
- Features synthetic bristles
- Designed to glide evenly over facial contours

I BEAUTY refreshing facial wipes

Dual-action cleansing wipes that refresh the skin as they gently sweep away the day's impurities, grime and makeup

Available in retail size

- Dual-action wipes remove makeup and impurities with ease
- Soft, gentle and instantly refreshing for tired skin
- Enhanced with skin-soothing aloe vera, cucumber extracts, superfruits and coffee extract

IMAGE SKINCARE PRO

A collection of treatment room essentials, featuring professional-only products with customizable, aloe-based gel peels, advanced peels and treatment enhancers



IMAGE Skincare PRO microderm exfoliator

An intensive exfoliating gel that removes dead skin with AHAs, poly hydroxy acids and rose quartz micro-crystals

Available in backbar size

- Removes dead skin with physical, enzymatic and chemical exfoliation
- Helps to improve the appearance of dullness, fine lines and uneven tone
- Leaves skin soft, smooth and radiant

IMAGE Skincare PRO pre-extraction emulsion

A neutral-pH solution that helps to open pores and remove impurities from congested skin

Available in backbar size

- Hydrates and preps the skin for extractions for optimal treatment results
- Encourages removal of impurities from the skin
- Helps to reduce surface sebum and minimize the appearance of pores

O² LIFT

Our signature oxygenating treatment designed to boost brightness and glow in dull skin



O² LIFT gel to milk cleanser

An oil-based cleanser that gently removes makeup and surface impurities while moisturizing the skin

Available in backbar size

- Gel-to-milk texture gently cleanses to leave the skin soft, smooth and refreshed
- Removes residue, makeup and impurities
- Enhanced with the moisturizing benefits of grape-seed oil
- Helps to moisturize the skin

O² LIFT enzymatic facial peel

An exfoliating gel peel that rolls away dead skin for a smooth, bright and revitalized appearance

Available in backbar size

- Fruit extracts help to exfoliate dull skin
- Liquid-to-gel transforming texture facilitates the removal of dead skin
- Contains antioxidant green tea, vitamin A and vitamin C

O² LIFT oxygenating facial masque

An effervescent masque that bubbles on contact to refresh, revitalize and brighten the skin

Available in backbar size

- Foaming action bubbles on contact, providing an invigorating burst to refresh the skin
- Helps to brighten dull skin
- Aids in smoothing uneven skin texture and the appearance of wrinkles

O² LIFT stem cell facial enhancer

An enhancer powered by plant cell extracts that helps to promote resilience and healthy skin

Available in backbar size

- Helps to promote skin resilience
- Helps to soothe and condition the skin
- Contains a blend of fruit, flower, leaf and stem extracts

O² LIFT tinted moisturizer

A sheer tinted moisturizer that helps to even out skin tone and give the skin a fresh, flawless finish

Available in backbar size

- Tinted formula gives a hint of color to help even out skin tone and blur imperfections
- Offers a smooth finish and weightless feel to help prime the skin
- Helps to soothe the skin
- Antioxidant blend helps to shield against the effects of environmental stressors

O² LIFT treatment kit

A professional treatment kit that helps to brighten and revitalize dull skin

- Features O² LIFT gel to milk cleanser, O² LIFT enzymatic facial peel, O² LIFT oxygenating facial masque, O² LIFT stem cell facial enhancer and O² LIFT tinted moisturizer
- Helps to exfoliate and brighten dull skin
- Leaves skin with the appearance of renewed radiance and a healthy-looking glow

O² LIFT treatment kit



I ENHANCE

A collection of professional treatment enhancers designed to customize IMAGE protocols and optimize results



I ENHANCE hyaluronic acid facial enhancer

A hyaluronic acid booster ideal for dry, dehydrated, dull or mature skin that helps to soften and smooth the look of lines

I ENHANCE retinol facial enhancer

An essential treatment booster powered by vitamin A to revitalize skin texture, support skin elasticity and help reveal renewed skin

I ENHANCE vitamin C facial enhancer

A vitamin C enhancer that helps to target dullness, support skin elasticity and provide antioxidant benefits

I ENHANCE kojic acid facial enhancer

A concentrated kojic acid solution formulated to deliver potent brightening benefits to skin with more advanced pigmentation and environmental damage

I ENHANCE antioxidant facial enhancer

A hydrating treatment enhancer featuring a blend of select antioxidants that help to brighten, soothe and fight the effects of environmental damage

I ENHANCE stem cell facial enhancer

An enhancer powered by plant cell extracts that help to restore resilience and nourish the skin

I PEEL

A collection of professional aloe-based gel peels and advanced peels that are fully customizable for every concern and treatment level



PROFESSIONAL ONLY

I PEEL degreasing prep solution

A pre-treatment AHA/BHA degreasing solution that removes oil and impurities to prep the skin for chemical exfoliation

Type: Preparation

I PEEL ormedic lift®

A multi-fruit enzyme peel that helps to brighten, balance and revitalize dull skin

Type: Enzyme

I PEEL the signature facelift®

Our signature treatment, featuring vitamin C, fruit enzymes and hyaluronic acid to brighten, hydrate and soothe the skin

Type: Enzyme

I PEEL lightening lift®

A kojic and lactic acid peel that brightens dull skin and helps to minimize the appearance of discoloration

Type: Chemical

I PEEL lightening lift FORTE

A lactic acid-based peel that helps to diminish the appearance of more advanced pigmentation

Type: Chemical

I PEEL wrinkle lift®

A chemical peel formulated with glycolic acid and retinol to support skin elasticity and help reduce the appearance of lines

Type: Chemical

I PEEL wrinkle lift FORTE

An advanced glycolic-based peel solution for deeper wrinkles and more progressed signs of aging

Type: Chemical

I PEEL acne lift®

A combination AHA and BHA peel that clears and calms blemish-prone skin, helping to reduce blemishes and the appearance of redness

Type: Chemical

I PEEL advanced BHA lift

A salicylic acid peel for blemish-prone skin that helps to exfoliate dead skin and remove excess oil

Type: Chemical

I PEEL perfection lift™

A peel with salicylic acid, lactic acid and resorcinol to address multiple signs of aging and blemishes

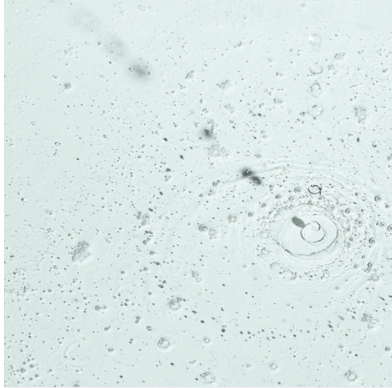
Type: Chemical

I PEEL perfection lift FORTE

An advanced peel with AHAs, BHAs and active exfoliants for tough-to-treat signs of aging and blemishes

Type: Chemical





I IMAGE SKINCARE

IMAGE Skincare
800.796.SKIN (7546)
WWW.IMAGESKINCARE.COM

JOIN THE IMAGE NATION



IM-441-V4

